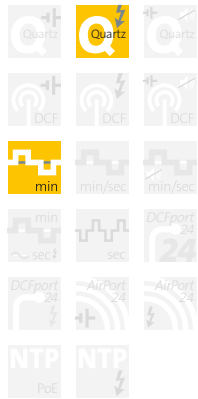


Training Clocks/Pace Clocks, for in- and outdoors, with seconds cross, backlighted by LED



Indoor/
Outdoor
analog
single face

Type series
765



LED



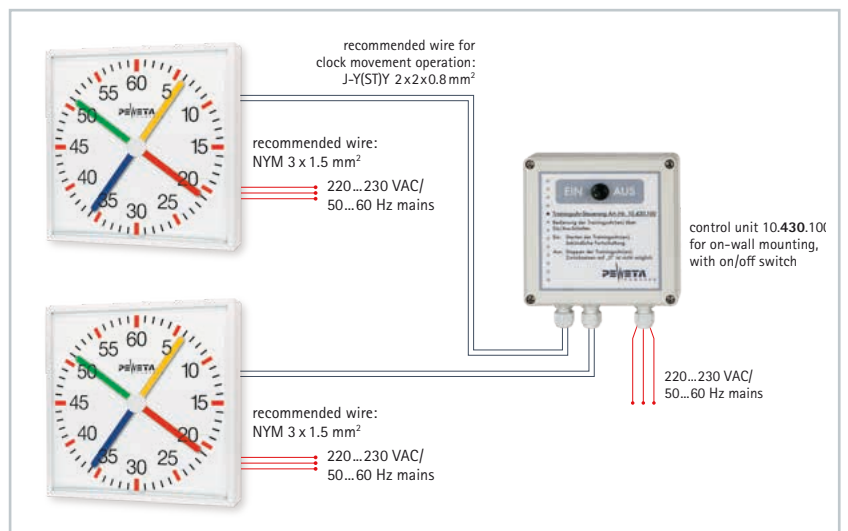
42.765.611 shown

This kind of training/pace clocks indicates split times during swim training/warm-up training. Times are taken by each swimmer individually. The 4-coloured seconds cross indicates the time elapsed, one complete turn corresponds to exactly 60 seconds.

For parallel operation of 2 training clocks, the slave clock type connected to the central control unit 10.430.100 is recommended. Thus an identical display (synchronous time) is always guaranteed on all training clocks connected.

Training clocks resistant to thrown balls
for indoors see pages 92 and 93.

Diagram shows 2 training clocks 71.765.611 with control unit 10.430.100



Case

■ cir. 642 x 642 mm weatherproof aluminium case. Outside 2-layer tempered enamel, light grey (RAL 7035). Optionally custom enamelled, at a surcharge. Extraordinarily solid construction, incl. light fitting. Absolutely corrosion resistant and weatherproof. Protection grade IP 54 (EN 60 529).

Mounting

On-wall mounting as standard. Wall or ceiling mounting bracket available at a surcharge (option).

Clock types

- Quartz movement, mains operated 230 VAC, fixed power supply.
 - Slave movement, pulse operated 24 V To be operated by control unit 10.430.100 only.
- Recommended for synchronized, parallel operation of 2 training clocks/pace clocks 71.765.611 in securely fixed position.**

Face (backlighted)

Acrylic plastic, white, translucent, 5 mm thick, with red/black second bars and black numerals. Very distinctive and easy doubt-free reading even over longer distances. Minimum reading distance 30 m.

Illumination

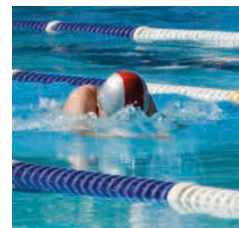
Backlighting by durable, maintenance-free light-emitting diodes (LEDs), operating voltage 230 VAC/50...60 Hz. As an option, a light-sensitive switch can be included.

Hands

Acrylic plastic 4-coloured cross, translucent, intervals in second cycles.

Front glass

Shock-resistant, highly transparent 4 mm Plexiglas® XT.



**Indoor/
Outdoor**
analog
single face

Type series

765



Technical data	
Operating power (quartz clock type, mains operated)	220...230 VAC
Operating power (slave clock type, pulse operated)	24 V second pulses
Operating power (illumination)	230 VAC/50-60 Hz
Intervals	second cycles
Dial sections	0...60
Reading distance	min. 30 m

Clock type	Item No.	€ each
Quartz clock, mains operated 230 VAC	42.765.611	2,250.-
Slave clock, minute pulse 24 V (second cycles)	71.765.611	2,050.-

Accessory	Item No.	€ each
Control unit for 2 training clocks 71.765.611, operating power 220...230 VAC/50...60 Hz, ON/OFF switch	10.430.100	349.-

Options	Suffix	Surcharge € each
Case custom enamelled	-10	on request
Case with lugs for suspension by ropes or chains (indoor mounting only)	-30	on request
Wall or ceiling mounting bracket for single face outdoor clocks, standard length 70 mm	-34	on request
Light-sensitive switch for internal illumination	-44	250.-
Custom logo on clock face	-47	on request

Options – just as you like them ...

These clocks are available optionally with customised features at the surcharges as listed. Just pick your option(s) and add the appropriate suffix(es) to the Item No.

Function

The (swim) training/pace clock can be used by any number of swimmers simultaneously.

The crossed second hands show the time elapsed in seconds.

The swimmer will wait for a maximum of 14 seconds until the next colour of the four second hands ("his" colour) reaches the 12-o'clock-position and will then memorise the colour of "his" hand.

Upon reaching the edge of the pool (after 1 or 2 laps) the time elapsed can be read according to the position of "his" second hand.

**Training clocks
resistant to
thrown balls**

for indoors see pages 92 and 93.